



GENE RANTZ
MEMORIAL
PLEIN AIR PAINT OUT

July 19 & 20, 2024

Gallery Exhibit July 21 thru August 3

Artists' Handbook



Welcome to the Gene Rantz Memorial Plein Air Paint Out

The Northport Arts Association continues to build on the Gene Rantz's Plein Air Paint Out. This year we will have 2 days of painting as well as golden hour painting.

Gene loved to paint throughout the Leelanau Peninsula and especially loved the sunsets during the golden hour.

About the Northport Arts Association

We are a thriving community of artists who are fortunate to have a home in the Village Arts Building nestled in the beautiful Village of Northport.

Our organization is made up of people with creative talents who share, create, teach, inspire and collaborate as well as sell their art. The tip of the Leelanau County blesses us with beautiful scenery, beaches, forests, bays and rolling hills filled with cherries and vineyards. In our gallery exhibits you will see how our views give inspiration to the artists who live and work in our area.

We have so much to offer for all the arts and we want you to enjoy the experience.

2024 Plein Air Team

Linda Bayer • Tom Whitney • Lisa Westling

The team provides countless hours planning, preparing and presenting this event.

The team is very grateful for the many volunteers that help throughout this event to make it a success!

2024 Plein Air Awards

Awards:

1 - Best of Show	\$500
1 - 1st Place	\$300
1 - 2nd Place	\$200
1 - 3rd Place	\$150
1 - Golden Hour	\$200
6 - Honorable Mentions	

Plein Air Schedule

Friday, July 19

- 7am-10am** Check in at the Northport Arts Association, Village Arts Building (VAB) 301 N. Mill St.
- Check-in & Stamping for Friday painting
- A light breakfast will be available and some snacks for the road.
Paint throughout the day within the map guide in this handbook. Suggested locations and approved private property locations are included.
- 12-5pm** Artwork must be framed and ready to hang by 5pm.
- Submit up to three (3) pieces of artwork.
- Late artwork will not be accepted.
- VAB will be open from 12-5pm to come in and frame your work.
- 4pm-6pm** Artwork will be hung.
Photos of artwork will be taken.
- 4pm -** Golden Hour Painting.
Have your surfaces stamped for golden hour when you drop off Friday's artwork.

Saturday, July 20

- 7am-10am** Check in at the Northport Arts Association, Village Arts Building (VAB) 301 N. Mill St.
- **Drop off Golden Hour Painting.**
- Check-in & Stamping for Saturday painting
- A light breakfast will be available and remaining road snacks.
Paint throughout the day within the map guide in this handbook.
- 12-4pm** **Artwork must be framed and ready to hang at the VAB by 4pm.**
- Submit up to three (3) pieces of artwork.
- Late artwork will not be accepted.
- VAB will be open from 12-4pm to come in and frame your work.
- 4pm-5pm** Artwork will be hung.
Photos of artwork will be taken.
- 5pm - 6pm** Judging of the artwork
- 6pm-9pm** Saturday evening Wet Paint Sale & Reception.
Ticketed event, artists have free entry

Sunday, July 21 thru Sunday, August 3 Gallery Exhibit and Sale (optional)

- August 3, 12-4pm** Artwork Pickup
Contact the NAA if you need to make other arrangements

Plein Air Guidelines

The Gene Rantz Plein Air Paint Out is open to all artists. Entry is not juried.

Painting

A minimum of 95% of each painting must be created on-site, in the true spirit of Plein Air Painting. Minor adjustments or corrections may only be done in a studio to fix forms or colors.

Artwork media: may include oil, watercolor, acrylic, pastel and gouache.

Submissions per artist: Up to three (3) pieces of artwork can be submitted each day. Plus 1 for Golden Hour

Check-in & Material Stamping

- All artwork submitted for the event must be created en plein air on July 19 &/or 20, 2024.
- Artists must check in between 7am-10am, each day (Friday & Saturday) to have canvases stamped.

Painting/Framing Period

- Artwork must be at the VAB, ready to hang by 4pm each day. Have artwork stamp checked prior to framing.
- **Artwork submitted after 5pm on Friday or 4pm on Saturday will not be accepted.**
- Photos of the artwork will be done by NAA during the hanging of the exhibit(s)
- **Artwork must have a secure wire for hanging. No saw tooth hangers or bevel boards accepted.**

Painting Display, Sales & Payment

- All artwork submitted must be for sale.
- The NAA will retain a commission of 30% on all sales. NAA collects and pays the sales tax. Payments will be mailed within 10 days of the end of the gallery exhibit, August 3.
- Artists must fill out and submit a W-9 form during check in. Forms can be downloaded from website or picked up during check in. If the NAA has on W-9 for you on file from last year, you do not need to fill out another.
- Accession forms are available online or during framing to fill out for artwork submission.

Gallery Exhibit

- The gallery exhibit is optional and there is no fee to display.
- Artwork pickup times – August 3, 12-4pm. You may make arrangements for others to pick up your work. Let the NAA know who is picking up for you in writing. The Northport Arts Association is not responsible for art left on our site past the pick-up due dates and may take possession of the work after 30 days.

Reception

- The Saturday reception is a ticketed event. Artists will have a badge for entry and 1 free beverage ticket
- We will have cards for artists to hand out while painting for guests to receive \$5 off entry fee at the door.

General Information

- Artists are responsible for their own accommodations. The NAA will reach out to members to see if space is available. If you are interested in accommodations, please let the NAA know and you will be added to a list. PLEASE SET UP YOUR OWN ACCOMMODATIONS IN CASE SPACE IS NOT AVAILABLE.
- Social distancing protocols at the time will be followed at the Village Arts Building.
- Award winner's artwork may be featured on the NAA 2024 annual Report and other 2024-25 promotions. Artists must be willing to accept the terms as presented. Artists will have a byline on material when their art is used.

REFUND POLICY - Withdrawal from the event by artist:

- If the NAA is notified three weeks prior to the event a full application fee may be refund less a \$10 processing fee.
- Less than three weeks prior to the event: No refund.

(NAA understands that serious emergencies come up that may prevent someone from attending an event at the last minute. Please contact the NAA if you would like your circumstances to be reviewed for a potential refund)

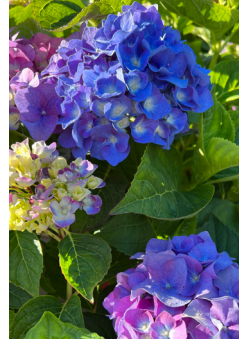
CANCELLATION POLICY: Occasionally, NAA must cancel an event due to not meeting minimal applications, faculty illness or other unforeseen circumstances. If we do, we will notify you as soon as possible and you will receive a full refund of application fees paid. Please be aware that NAA is not responsible for losses incurred due to housing, travel or other arrangements.

Places of Painting Interest

Below are locations that property owners have approved painters to visit. If painting in another area, please be considerate of your locations and ask property owners if you can paint on their property.

PRIVATE PROPERTIES with permission to access to paint

1. Peninsula Perennials - 7740 N. Swede Rd. Northport. Rolling hills and nursery setting. Water and bathroom.



2. Hallstedt Homestead Cherries - 8227 North Matheson Rd.

We are a 53-acre sweet cherry, flower, and raspberry farm, with rolling hills and woods. Helpful if you let us know you are here!

2



3. The Ridge at Verterra - 8080 N Swede Rd.

Fantastic view of the Bay, overlooking grape vines and a pond. If an event is scheduled it may not be open to artists.

2



4. Luna Rosa Farms - 1461 N Eagle Hwy., Lake Leelanau

18 acre lavender farm in Lake Leelanau north of Suttons Bay. We have spectacular views of Lake Leelanau, Lake Michigan, the Manitou, and Pyramid Point. Not to mention a beautiful Italian style lavender garden and pond.

5. Idyll Farms - 10901 E Peterson Park Rd., Northport

Beautiful farm buildings. Best time to see goats in the field is 11am-4pm. Call Melissa 231-645-0053 if you want to paint on the farm. If painting along the roadside, no need to call.

6. Debbie Motter - 5789 N. Christianson Rd., Northport.

Surrounded by cherry orchards, rolling hills and wildflower meadows. Our property offers wide open views of Lake Michigan, the Manitou Islands, Pyramid Point and even the Crib.

7. Roaring Brook - 8287 N Gills Pier Rd., Northport

Beautiful views of Lake Michigan. Wander to the back of the house.

8. Evy & Ross Sussman - 12880 N. Forest Beach Shores

6 miles north of Northport. On the Bay, sand dunes, water, beach, stones and some yard sculptures all make for many priceless views. You are welcome.

9. Yvonne Nordstrand - 104 West Sixth Street

As in previous years, my front or back gardens are available for artists.

10. Northport Creek Golf Course, 355 West 8th St.

Let them know you are there and someone will direct you to safe area to paint. They may even take you to location in a golf cart.

PARKS & BEACHES

11. Gills Pier - Off of Gills Pier Road at the end of Onomonee Rd.

12. Grand Traverse Lighthouse - Leelanau State Park at the tip of the peninsula

13. Kehl Lake - Very end of Kehl Road.

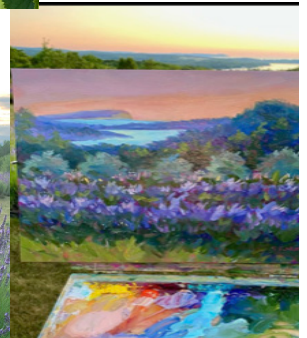
14. Omena Village & Omena Beach - South of Northport

15. Peterson Park - 10001 E Peterson Park Rd.

16. Village of Northport, G. Marsten Dame Marina & Haserot Park

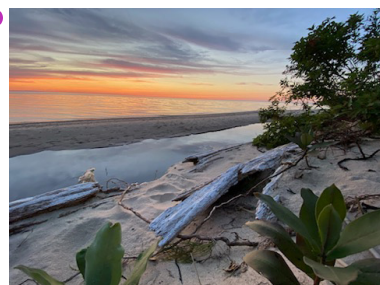
17. Woolsey Airport - 13591 E Woolsey Lake Rd.

4

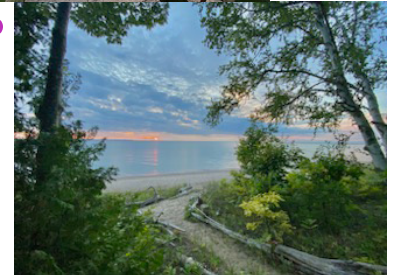


4

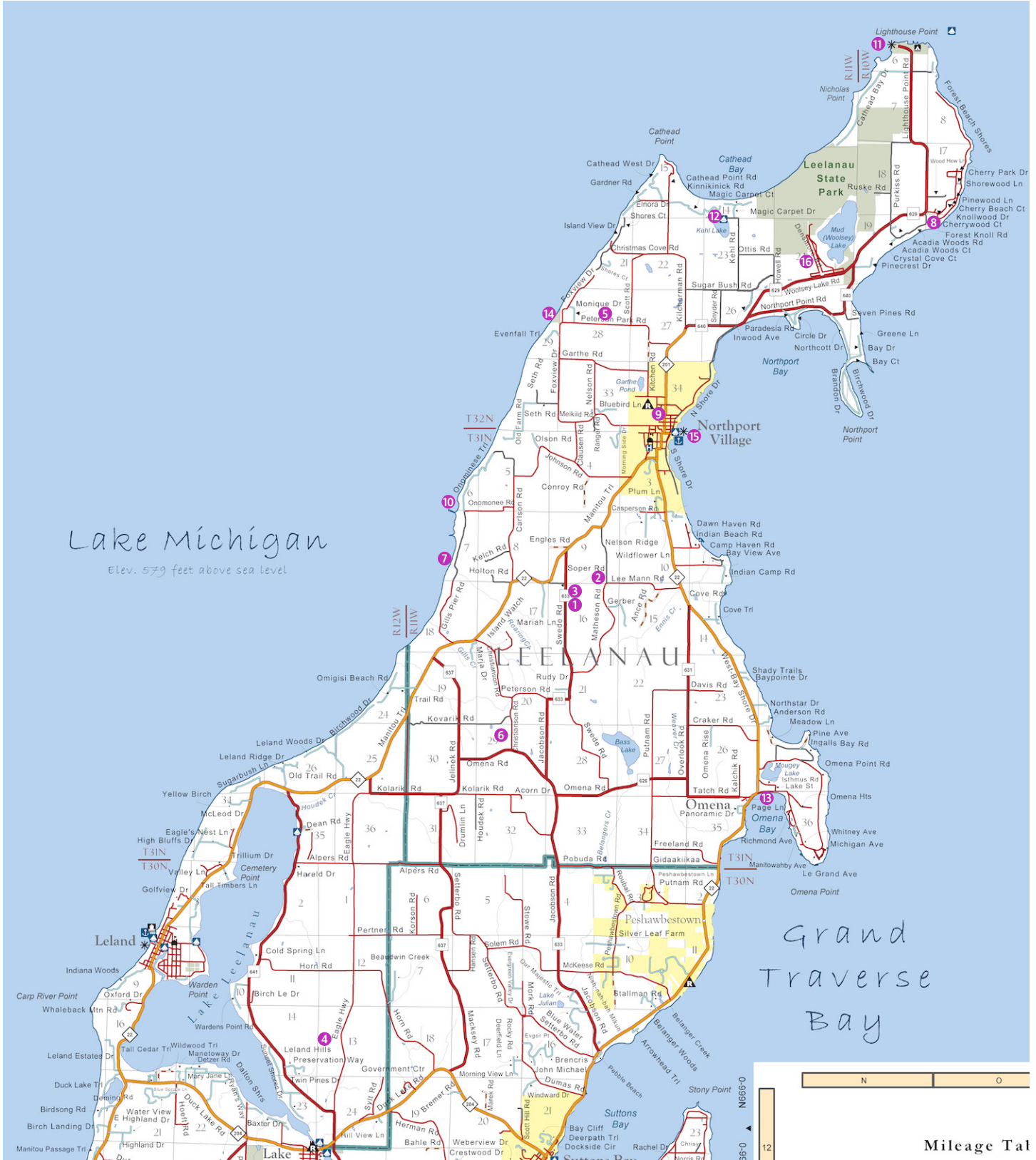
7



7



Painting Map



*We give THANKS to the organizations and donors
that support the Northport Arts Association*

BLICK[®]
art materials

